

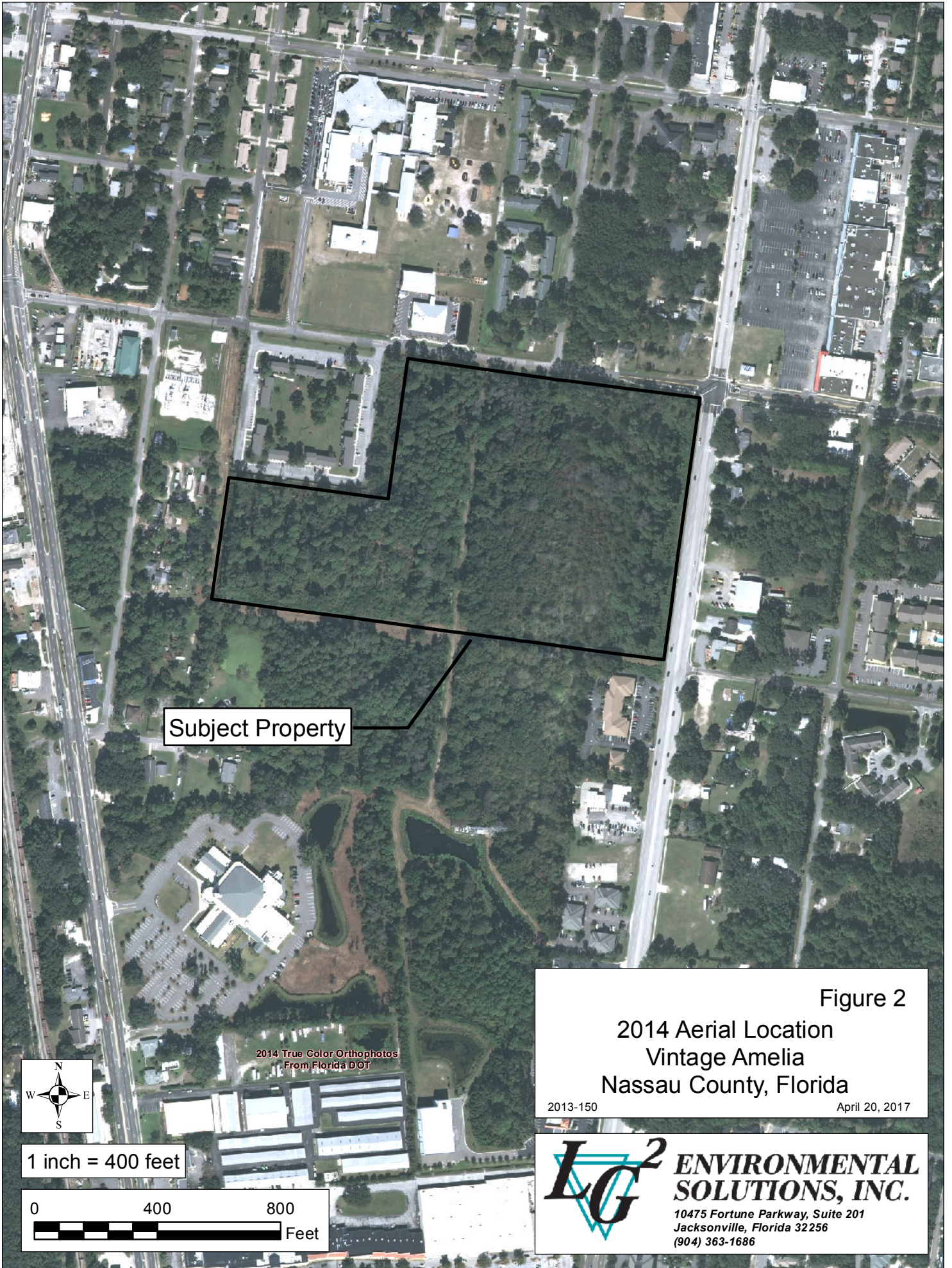
Figure 1

Topographic Site Location
Vintage Amelia
Nassau County, Florida

2013-150

April 20, 2017

LG² ENVIRONMENTAL SOLUTIONS, INC.
 10475 Fortune Parkway, Suite 201
 Jacksonville, Florida 32256
 (904) 363-1686



Subject Property

2014 True Color Orthophotos
From Florida DOT



1 inch = 400 feet

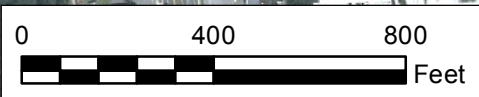


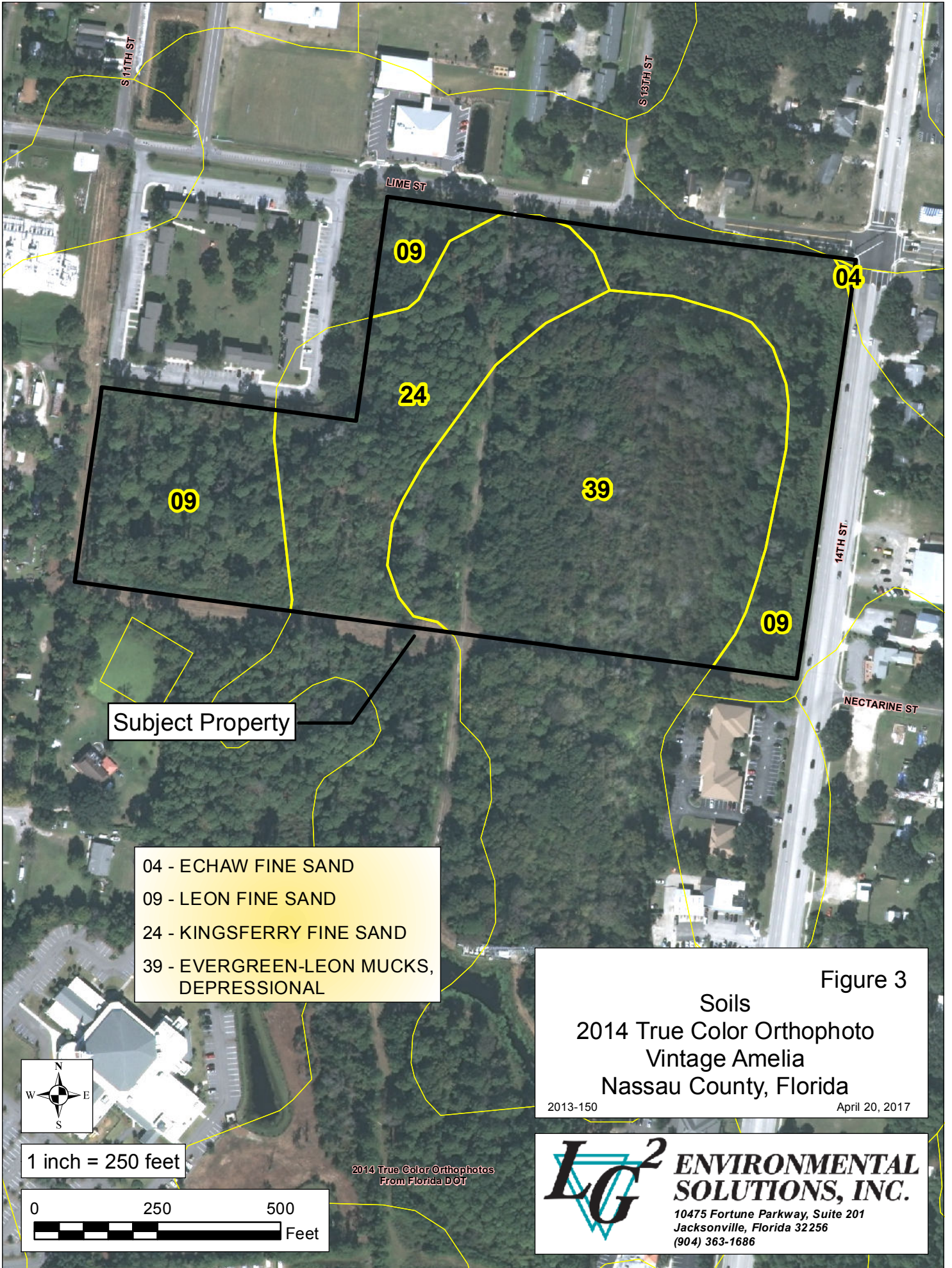
Figure 2

2014 Aerial Location
Vintage Amelia
Nassau County, Florida

2013-150

April 20, 2017

LG² ENVIRONMENTAL SOLUTIONS, INC.
 10475 Fortune Parkway, Suite 201
 Jacksonville, Florida 32256
 (904) 363-1686

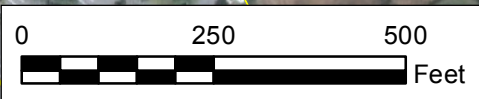


Subject Property

- 04 - ECHAW FINE SAND
- 09 - LEON FINE SAND
- 24 - KINGSFERRY FINE SAND
- 39 - EVERGREEN-LEON MUCKS, DEPRESSIONAL



1 inch = 250 feet



2014 True Color Orthophotos From Florida DOT

Figure 3

Soils
 2014 True Color Orthophoto
 Vintage Amelia
 Nassau County, Florida

2013-150 April 20, 2017

LG² ENVIRONMENTAL SOLUTIONS, INC.
 10475 Fortune Parkway, Suite 201
 Jacksonville, Florida 32256
 (904) 363-1686

14th & Lime Apartment Complex

Nassau County, Florida

Figure 4

Existing Site Conditions

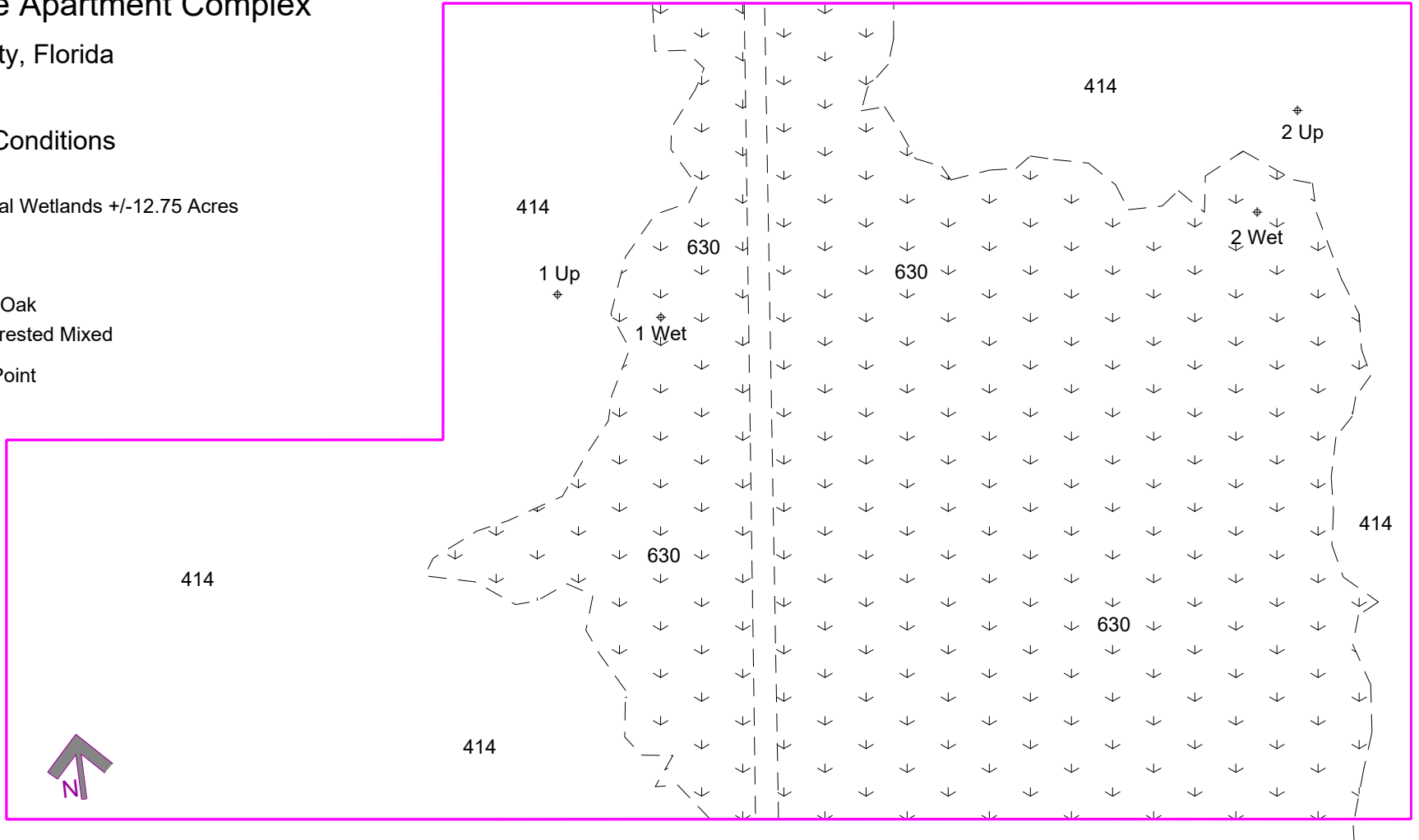
 Jurisdictional Wetlands +/-12.75 Acres

FLUCFCS Code

414.....Pine-Mesic Oak

630.....Wetland Forested Mixed

⊕ Corps Data Point





Vintage Amelia

Nassau County, Florida

Figure 5

Proposed Site Conditions

-  Proposed Wetland Impacts +/-9.7 Acres
-  Wetlands to Remain +/-3.05 Acres

